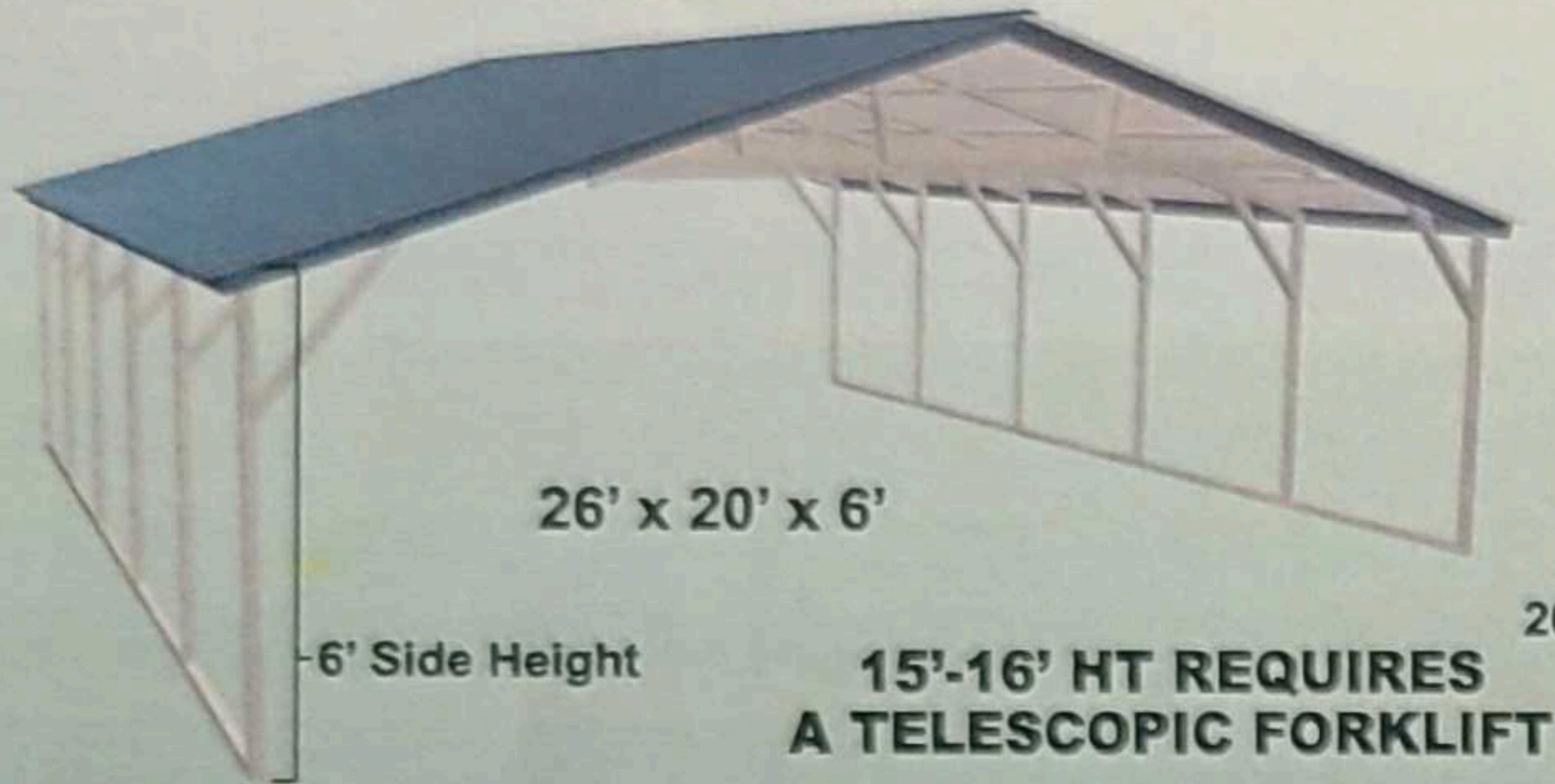




QUALITY IS OUR FIRST PRIORITY

TRIPLE WIDE CERTIFIED 150/40 26' to 30' Wide - Up to 16' Height - Any Length

VERTICAL

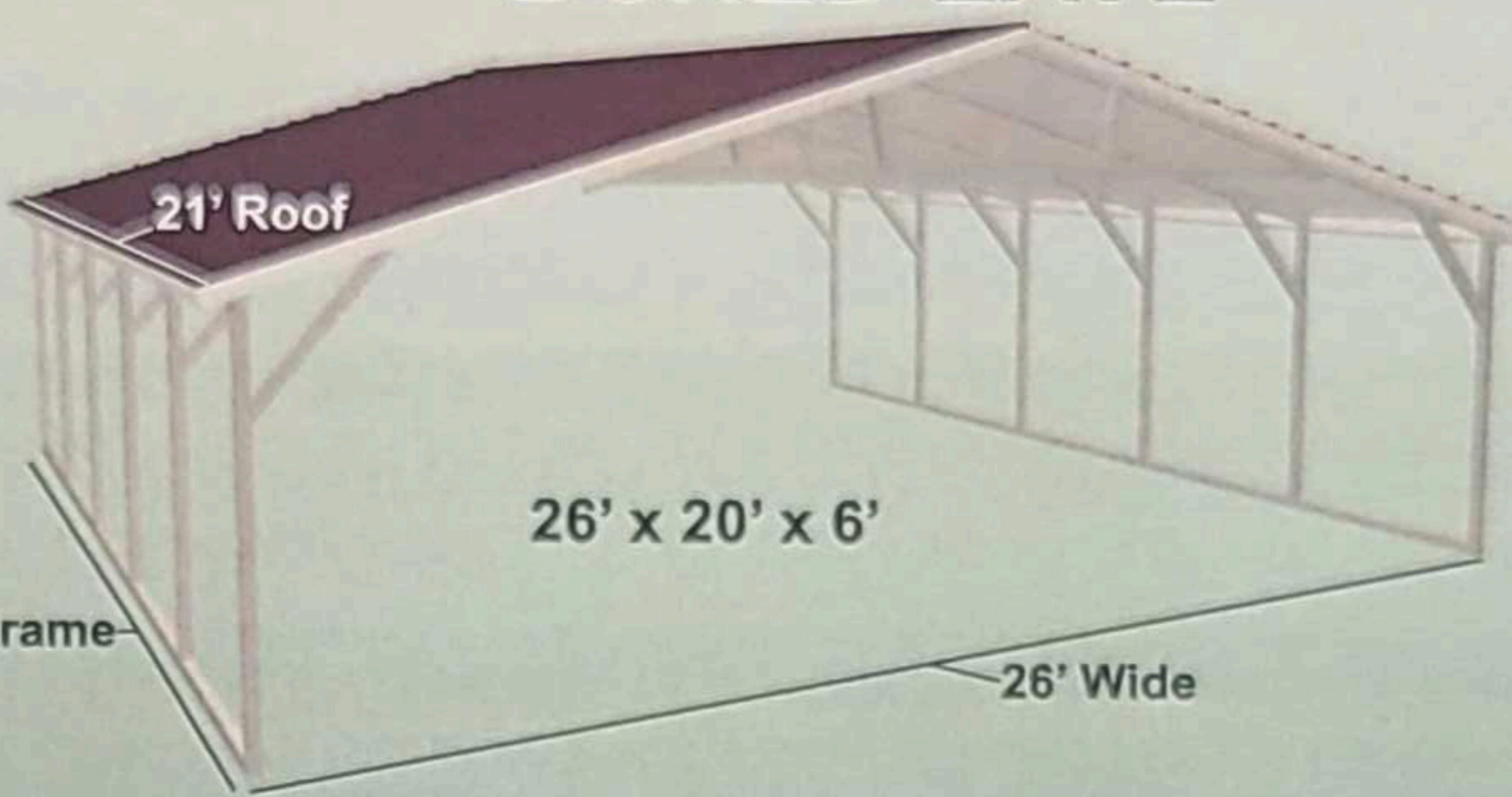


26' x 20' x 6'

6' Side Height

15'-16' HT REQUIRES A TELESCOPIC FORKLIFT

BOXED EAVE



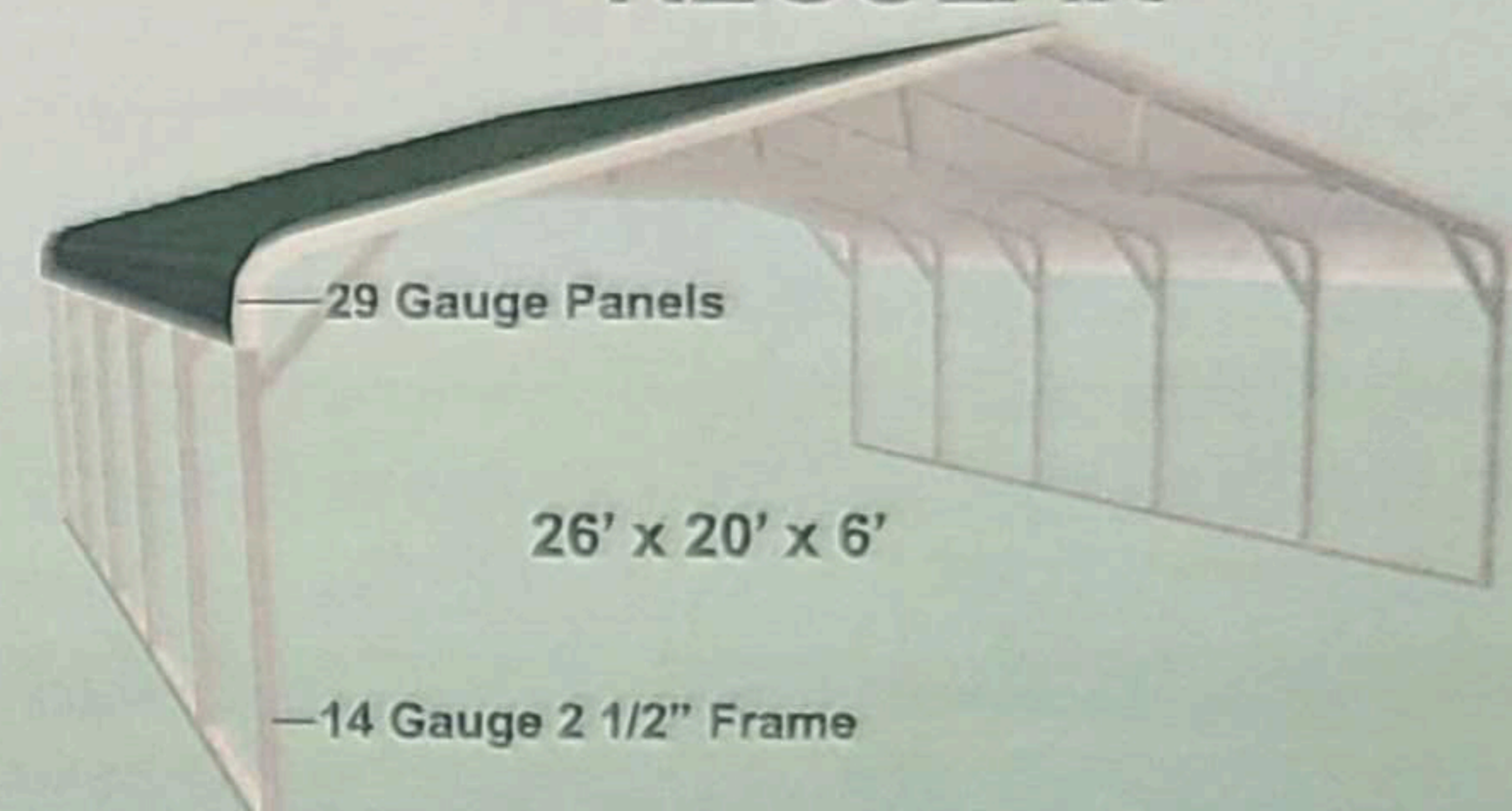
21' Roof

26' x 20' x 6'

20' Frame

26' Wide

REGULAR



29 Gauge Panels

26' x 20' x 6'

14 Gauge 2 1/2" Frame

ALL BUILDINGS INCLUDE:

- 29 Gauge Roofing
- Braces on Every Leg
- Welded Center Truss
- Anchors Included
- 4' Centers

- Roof Length Is 1ft. Longer Than Frame Length
- 1 YEAR WORKMANSHIP WARRANTY (Limited)
- 10 Year Warranty on 14ga. 2 1/2" Framing

- 20 YEAR Limited Rust Through Warranty on:**
- Panels for Vertical Roofs Up To Any Length
 - Regular and Boxed Eaves Up To 31'
 - Framing 12ga. 2 1/4"

Standard Heights 6'-16'

26 x 20 \$3,495	28 x 20 \$3,595	30 x 20 \$3,695
26 x 25 \$4,295	28 x 25 \$4,495	30 x 25 \$4,595
26 x 30 \$5,195	28 x 30 \$5,395	30 x 30 \$5,595
26 x 35 \$6,095	28 x 35 \$6,295	30 x 35 \$6,495
26 x 40 \$6,995	28 x 40 \$7,195	30 x 40 \$7,395
26 x 45 \$7,790	28 x 45 \$8,090	30 x 45 \$8,290
26 x 50 \$8,590	28 x 50 \$8,990	30 x 50 \$9,190

Standard Heights 6'-16'

26 x 20 \$3,195	28 x 20 \$3,395	30 x 20 \$3,495
26 x 25 \$3,995	28 x 25 \$4,195	30 x 25 \$4,295
26 x 30 \$4,895	28 x 30 \$4,995	30 x 30 \$5,195
26 x 35 \$5,695	28 x 35 \$5,895	30 x 35 \$6,095

Standard Heights 6'-16'

26 x 20 \$3,095	28 x 20 \$3,195	30 x 20 \$3,395
26 x 25 \$3,895	28 x 25 \$3,995	30 x 25 \$4,195
26 x 30 \$4,695	28 x 30 \$4,895	30 x 30 \$4,995
26 x 35 \$5,495	28 x 35 \$5,695	30 x 35 \$5,895

Buildings over 35 feet long must be vertical roof style.

LAND MUST BE LEVEL PRIOR TO THE INSTALLATION OF THE BUILDING!

PLEASE NOTE THAT THE COLORS MAY VARY DUE TO THE PRINTING PROCESS.



All Units Standard With

- 6'-12' Single Leg, Single Base Rail.
- 13'-14' Single Leg, Single Base Rail, Reinforced.
- 15'-16' Double Leg, Double Base Rail.

OPTIONS, ACCESSORIES AND EXTRAS

OPTIONS	20' LONG	25' LONG	30' LONG	35' LONG	40' LONG
12G 150/50	\$410	\$530	\$650	\$770	\$890
J-Trim	60	70	85	95	110

HEIGHT	20' LONG	25' LONG	30' LONG	35' LONG	40' LONG
7' Tall	\$110	\$130	\$155	\$180	\$205
8' Tall	215	265	310	360	410
9' Tall	325	395	470	540	610
10' Tall	430	530	625	720	815
11' Tall	540	660	780	900	1,020
12' Tall	840	995	1,140	1,295	1,440
*13' Tall	1,190	1,370	1,775	1,955	2,245
*14' Tall	1,295	1,500	1,930	2,135	2,450
**15' Tall	1,920	2,280	2,640	3,120	3,600
**16' Tall	2,160	2,520	2,880	3,360	3,840

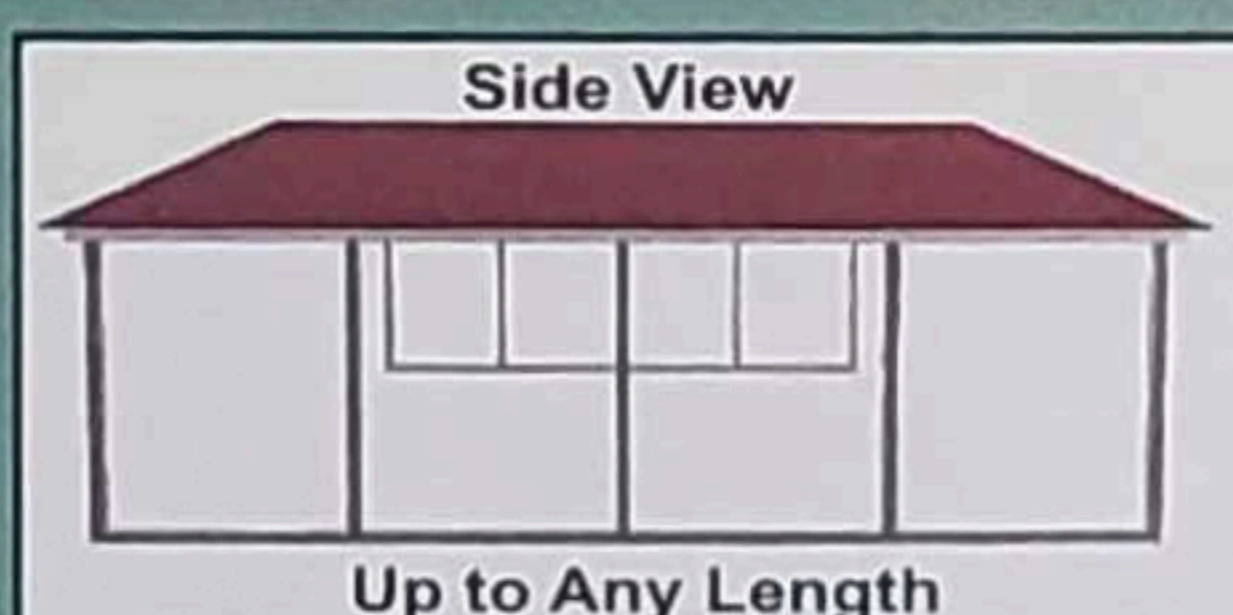
*Single Leg, Single Base Rail, Reinforced.

**Double Leg, Double Base Rail.

HEIGHT	20' LONG	25' LONG	30' LONG	35' LONG	40' LONG
6' Tall	\$440	\$520	\$620	\$700	\$860
7' Tall	550	650	775	875	1,075
8' - 9' Tall	660	780	930	1,050	1,290
10' Tall	770	910	1,085	1,225	1,505
11' - 12' Tall	880	1,040	1,240	1,400	1,720
13' Tall	990	1,170	1,395	1,575	1,935
14' - 15' Tall	1,100	1,300	1,550	1,750	2,150
16' Tall	1,210	1,430	1,705	1,925	2,365

VERTICAL SIDES (BOTH SIDES)	20' LONG	25' LONG	30' LONG	35' LONG	40' LONG
6' - 10' Tall Add	360	420	480	540	600
11' - 15' Tall Add	480	570	660	750	840
16' Tall Add	600	720	840	960	1,080

HEIGHT	26' WIDE	28' WIDE	30' WIDE
6' Tall	\$1,250	\$1,390	\$1,530
7' Tall	1,350	1,500	1,645
8' - 9' Tall	1,555	1,715	1,870
10' Tall	1,655	1,825	1,985
11' - 12' Tall	1,860	2,040	2,215
13' Tall	1,960	2,150	2,330
14' - 15' Tall	2,165	2,365	2,555
16' Tall	2,270	2,470	2,670
VERTICAL END (PER END)	450	510	570
VERTICAL TWO TONE (PER END)	450	500	550



Side View

Up to Any Length



Front View

26' to 30' Wide

Uncertified	Certified
\$500	6' X 6' \$750
\$600	8' X 8' \$800
\$650	9' X 8' \$850
\$700	10' X 8' \$950
\$800	10' X 10' \$1050
\$1400	*12' X 12' \$1900
\$2100	*14' X 14' \$2500
\$2500	*16' X 16' \$2700

White Only

Uncertified	Certified
\$600	6' X 6' \$850
\$700	8' X 8' \$900
\$750	9' X 8' \$950
\$800	10' X 8' \$1050
\$900	10' X 10' \$1150
\$1500	*12' X 12' \$2000
\$2200	*14' X 14' Coming
\$2600	*16' X 16' Soon

P. Grey Green Brown Barn Red Beige

Building must be 2' taller than the garage door when installed on the side.
*Chain Hoist Included In Price

Chain Hoist
\$325.00 Each

Frameouts
45 Angle \$85 (Plus Frameout Charge)
Garage Door \$150
Window \$75
Walk-In Door \$90

End Openings
Without Garage Door \$150

Insulation
Double Bubble \$1.50/sqft
Woven R-17* \$3.00/sqft

Gable End
Certified \$300
Vertical Gable Add \$85

Colored Screws
Add 3% of Retail Cost of Building

Connection Fees
Side to Side 21' Long Start at \$100
Add \$25 For Each Additional 5' in Length

Side Openings
With Garage Door
6'-10' Wide \$150
12' Wide \$200
14' Wide \$250
16' Wide \$300

Side Openings
Without Garage Door
6'-10' Wide \$250
12' Wide \$300
14' Wide \$350
16' Wide \$400
18' Wide \$450
20' Wide \$500

1/2 Panel w/ Trim
21' Long \$220
26' Long \$260
31' Long \$310
36' Long \$350

Cut Panel
21' Long \$50
26' Long \$60
31' Long \$70
36' Long \$80

Panels 3'
21' Long \$110
26' Long \$130
31' Long \$155
36' Long \$175

Windows
\$200 30" X 30"
\$225 30" X 36"

Walk-In Doors
36" X 80" \$300